

## GlobalView™ Fleet Management

*The world at your finger tips*

With today's high operating costs, it is imperative that vessel owners and operators proactively manage their fleet during each and every voyage. GlobalView is AWT's new, innovative fleet management system which combines the latest industry-leading ship routing technology with Google™ Earth to give fleet managers a visual, easy-to-use and powerful system for enhancing safety, saving fuel, time money and CO<sub>2</sub>.

**GlobalView is the first fleet management system to utilize Google Earth API technology, bringing new innovations to ship routing technology:**

- Customized graphical alerts quickly determine which vessels require your attention
  - Heavy weather
  - Off track
  - Under performing speed
  - Over consumption to date and estimated for entire voyage
  - Time lost or gained to date and estimated for entire voyage
  - ETA (compared to required ETA or laycan)
  - Tropical cyclone

**Now via GlobalView, color-coded vessel icons quickly and easily identify which ships have late, early or on-time arrivals.**

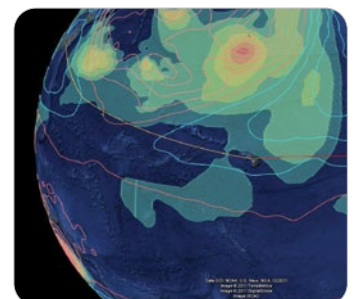
- Fleet, track, vessel position and weather display
  - Scroll through time
  - Customized fleet and voyage summaries

**Route comparisons can be viewed in GlobalView to make quick and easy evaluations of recommended routes and the Master's intended route—easily identifying which route will achieve greater fuel savings.**

- View message traffic between AWT and vessel along the voyage track
- Preliminary performance evaluation
- Comprehensive voyage details
- Detailed fuel consumption analysis

*“AWT assisted in a safer, more efficient fleet operation while also taking a large step toward protecting the environment by reducing en route fuel costs and avoiding TEU losses at sea.”*

– Ship manager





The Fleet Optimization Experts



# Fleet Management

GlobalView has new resources, making it easy for fleet managers to see in an instant, all in one place, what would have previously taken hours to gather from different sources.

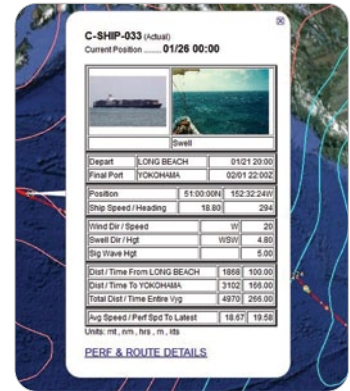
- Pirate attack location and type
- Marine news and AWT newsletters
- Time zones with local time calculation
- Government weather bulletins
- Port locations
- Straits and Capes
- AWT special reports
- Load lines
- ECA zones – existing and proposed
- Weather scales
- WMO report display

Unlike typical fleet management products that require fleet managers to access and analyze massive amounts of data, GlobalView presents the data visually in Google Earth.

- Voyage summary popup with ship image when available and image of the sea state at vessel location
- Secure data
- 24/7 access
- Customized tour of the fleet, system will fly to selected vessels and display any combination of the vessels location, track and voyage summary

### GlobalView Benefits:

- See your entire fleet in one glance via Google Earth
- Focus on what's important with graphical alerts
- Get the customized fleet summary you need at the click of a button
- Create customized voyage summaries with one click
- Set up your own customized alerts
- Get immediate access to latest global pirate activity
- Easily access comprehensive data that is all in one location
- Make better, faster decisions to enhance safety, save fuel, time and money



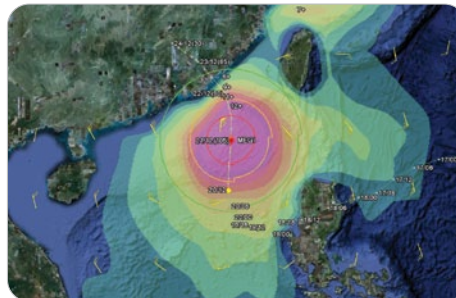
GlobalView voyage summary snapshot with highlighted alert fields.



GlobalView pop up window shows communication between the Master and AWT along the track.



Voyage track in GlobalView.



GlobalView enhanced wind and wave data around tropical cyclones.

[www.awtworldwide.com](http://www.awtworldwide.com)

**AWT Worldwide Headquarters**  
 140 Kifer Court  
 Sunnyvale, CA 94086  
 U.S.A.

T: +1 408 731 8600  
 F: +1 408 731 8601

**AWT New Jersey**  
 T: +1 609 275 5488  
 F: +1 609 750 9793

**AWT Japan**  
 T: +81 3 5211 5652  
 F: +81 3 5211 5653

**AWT Europe**  
 T: +44 1224 857920  
 F: +44 1224 582168

**AWT Korea**  
 T: +82 2 739 3464  
 F: +82 2 739 3404

**AWT Germany**  
 T: +49 4182 287132  
 F: +49 4182 287133

**AWT QuWeather**  
 T: +82 2 737 7007  
 F: +82 2 737 8521

**AWT London**  
 T: +44 (0)20 3178 8356  
 F: +44 (0)12 2458 2168

**AWT Hong Kong**  
 T: +852 2865 0282  
 F: +852 2865 0228

**AWT Shanghai**  
 T: +86 21 6334 6088  
 F: +86 21 6334 6085

**AWT Singapore**  
 T: +65 6829 7133